



# Departures from Sri Lanka

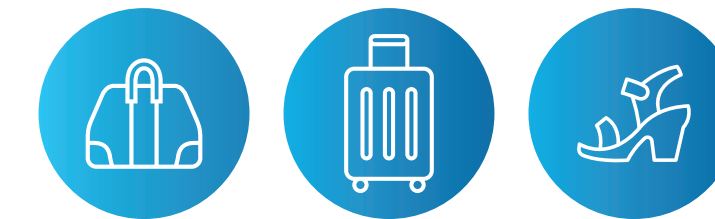
## Baggage screening

Passengers will have their temperature checked



Passenger belongings will be disinfected

For your safety, all your belongings will be sanitized before check-in



Face masks are mandatory at all times



## Keep 1m physical distance

When you arrive at the departure terminal, maintain social distance by using markers placed on the floor throughout the airport



All passengers will walk through a thermal screening to ensure safety



# Departures from Sri Lanka

## Frequent preventive cleaning

We also take special care to frequently disinfect and sanitize all surfaces within the terminal



## Maintain physical distance,

even as you stand in line using the physical distance markers placed on the floor



## Protective screens placed at counters for your safety

Every check-in counter now features a protective screen to minimize contact

**Hand sanitizers will be placed at convenient locations for your use**



# Departures from Sri Lanka

**Online check-in is available**  
for your convenience

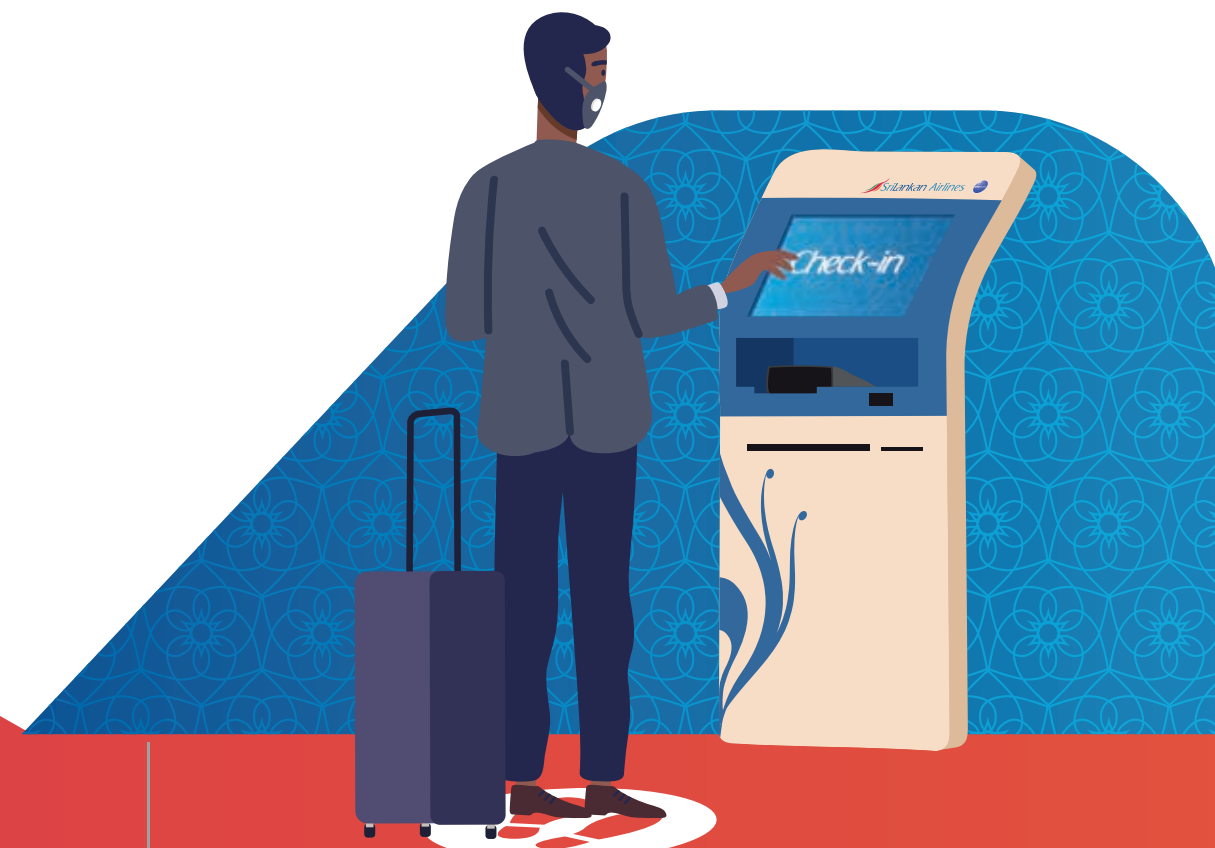


**Baggage drop counters are available**  
for added safety



**Display of hygiene and safety  
measures at prime locations  
throughout the airport**

**Self check-in kiosks are available**  
to minimize contact and ensure your safety



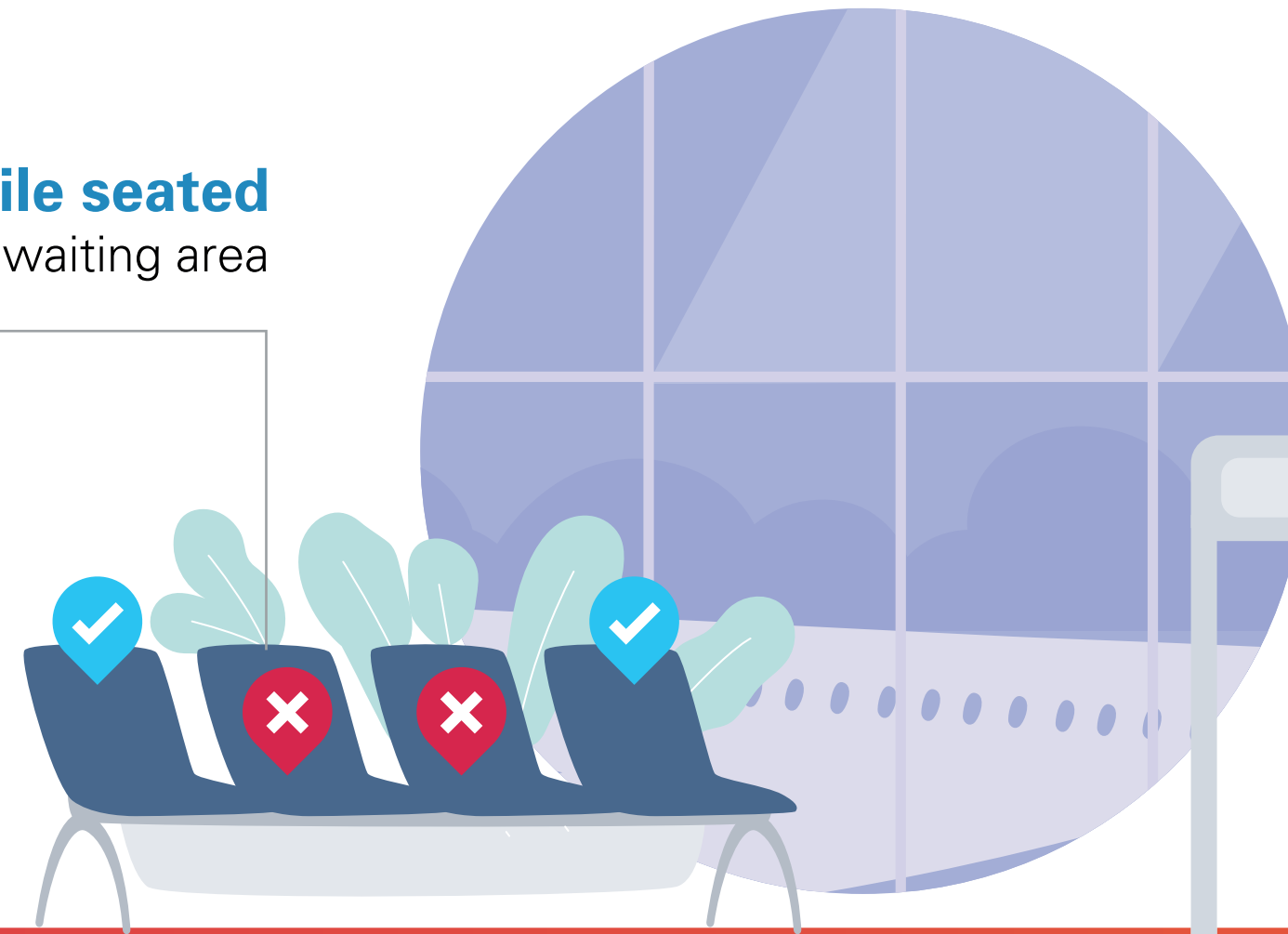


# Departures from Sri Lanka

**Maintain physical distance while seated**  
using markers placed on seats in the waiting area

## Our lounges are available

Relax and unwind in a safer and friendly atmosphere



**Gate staff equipped with personal protective equipment to ensure your safety**



Disposable  
Surgical Mask



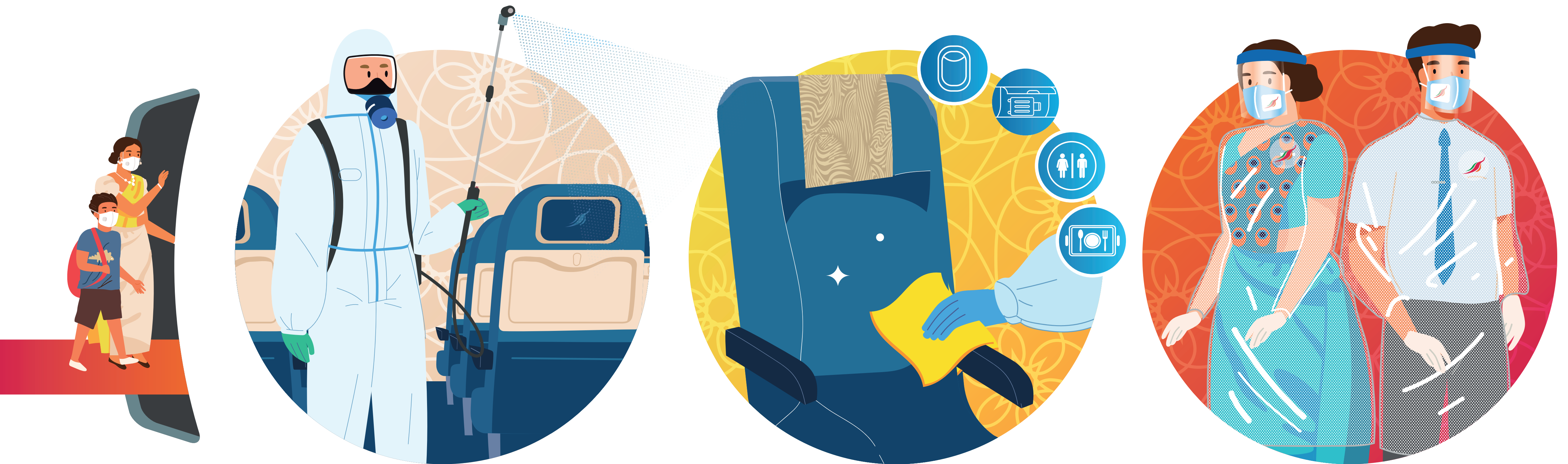
Hand Sanitizer



**Complementary hygiene kit**  
provided for you before boarding, so you can  
stay as safe as possible



# Onboard Hygiene



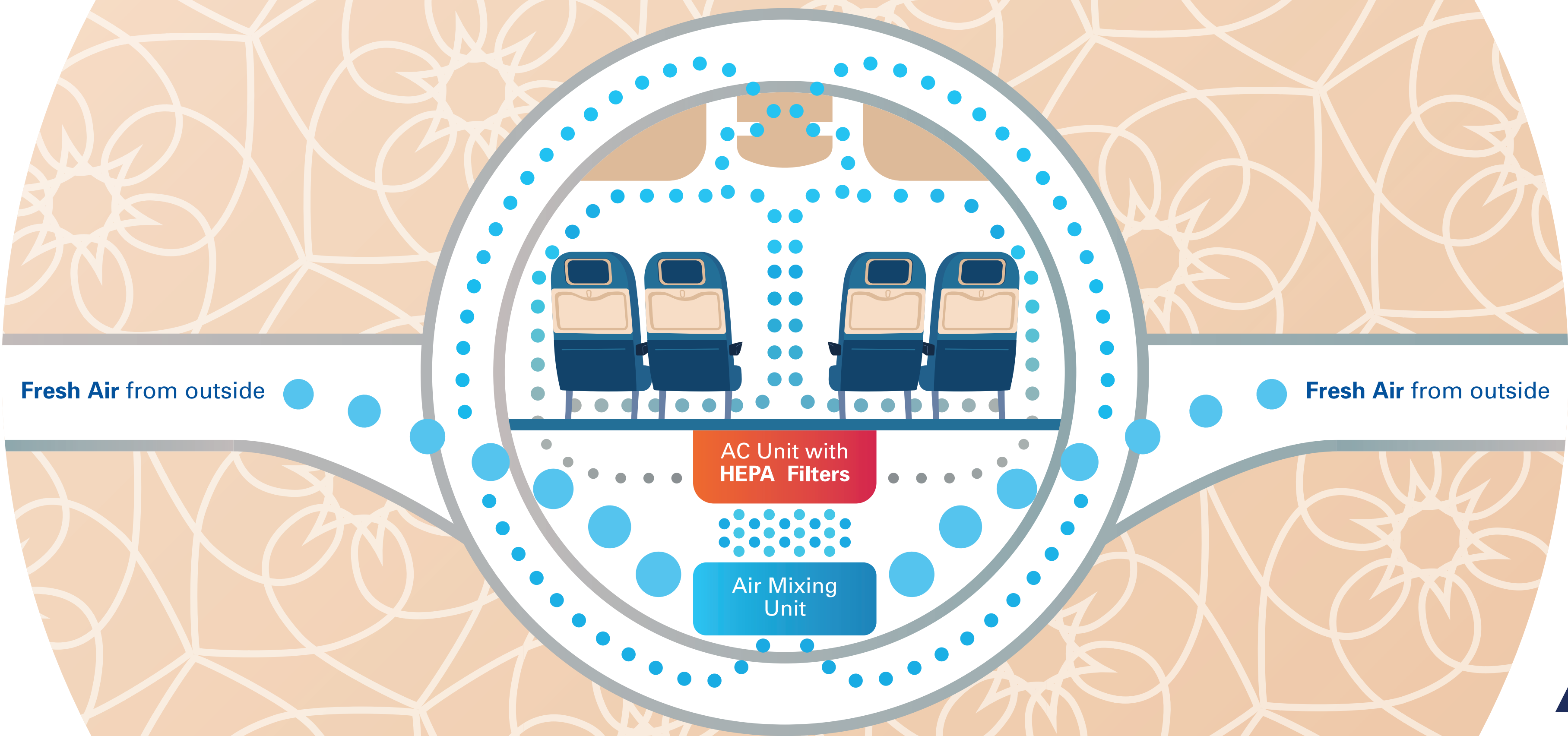
**For your safety, all aircraft are sanitized and disinfected 24/7 by our dedicated teams**

**Our operating crew wear personal protective equipment**

They also undergo regular mandatory health checks and are well-trained in COVID-19 safety protocols to keep you safe and comfortable



# Onboard



**Heavy duty HEPA filters continually refresh the cabin air onboard,** removing 99.9% of viruses, germs, dust, and allergens.





# Onboard



**You are required to keep your face mask on throughout the flight**



**For your safety, passengers will be boarded in batches**

Please cooperate with our crew members to ensure a seamless boarding process for everyone



**Boarding will be according to seat number - from last row to the first**

# Onboard



**Cabin announcements will educate you on enhanced safety and sanitization procedures onboard**



**Hygiene and safety measures for meals will be ensured**

Crafted in line with the most rigorous health and safety standards, and served with our signature island hospitality



**For your safety, seatback pockets will only contain essentials**



**When you arrive at your destination, remember to follow all safety regulations at country of disembarkation**



# Arrivals to Sri Lanka

Passenger belongings will be disinfected when you arrive in Sri Lanka



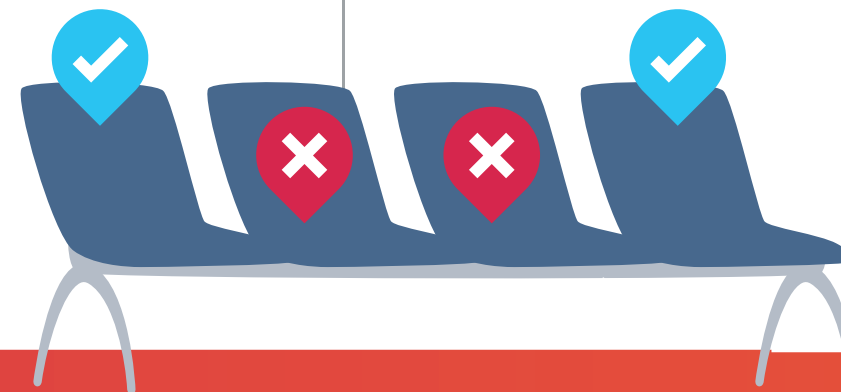
Your temperature will be checked to ensure your safety



Passengers and crew will receive PCR testing



Transit passengers will be guided to a dedicated waiting area



You will be required to walk through a thermal screening



Maintain physical distance and masks on while disembarking





# For everyone's safety remember to,



**Refrain from travelling if you feel unwell or experience discomfort before your flight**



**Arrive at the airport 3 hours before departure**



**Always wear a 3-layer face mask for best protection**

# And also remember:



**To minimize contact and ensure your safety, use our online check-in, self check-in, and baggage drop counters at every opportunity**

srilankan.com



Visit [www.srilankan.com](http://www.srilankan.com) for travel updates and information with regard to COVID-19 and baggage policy



Click here to  
**watch on YouTube**

